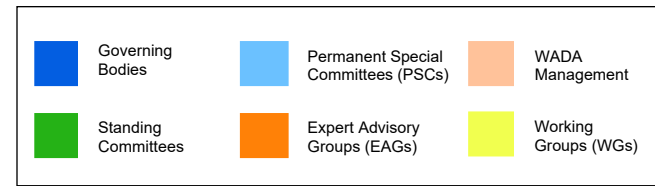
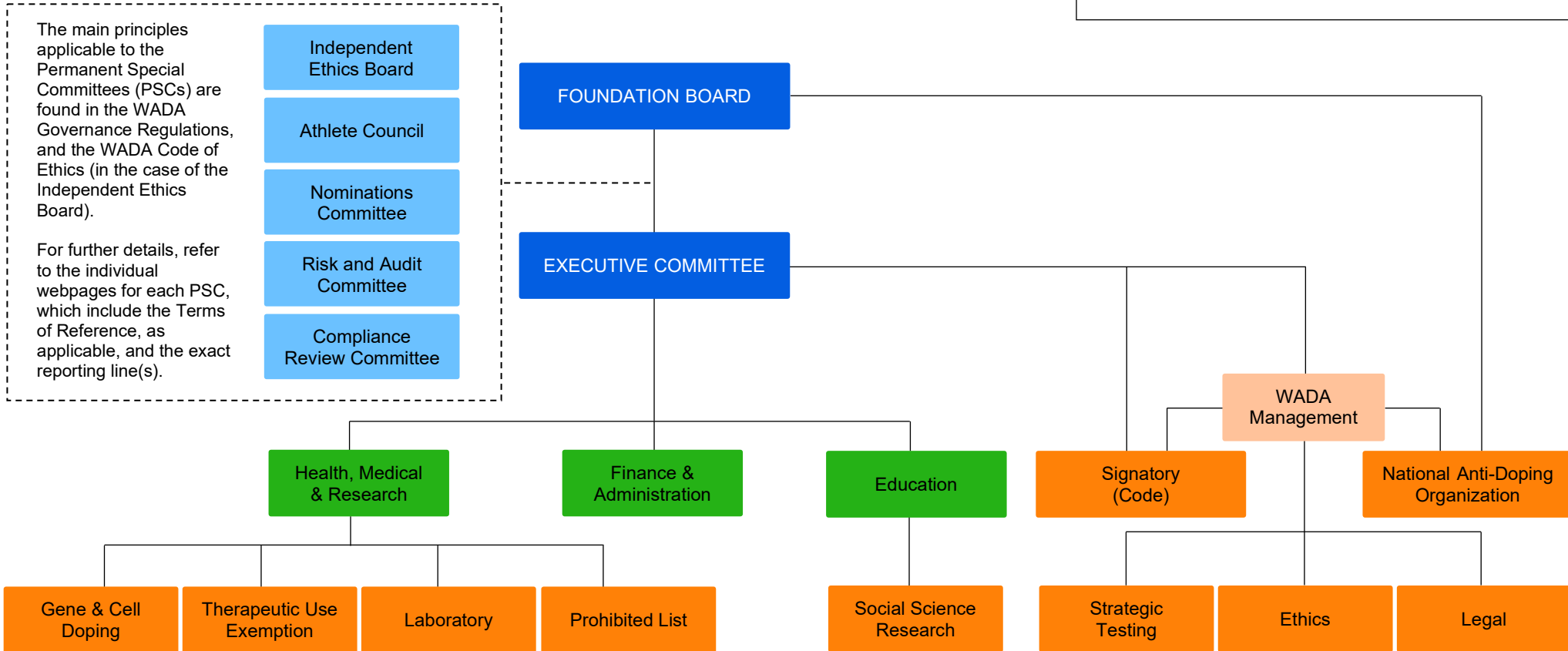


WADA Governance Structure



The main principles applicable to the Permanent Special Committees (PSCs) are found in the WADA Governance Regulations, and the WADA Code of Ethics (in the case of the Independent Ethics Board).

For further details, refer to the individual webpages for each PSC, which include the Terms of Reference, as applicable, and the exact reporting line(s).



Working Groups (WGs) can be created by the Foundation Board, the Executive Committee, the Standing Committees and WADA Management. Refer to the individual webpages for each WG, which include the Terms of Reference and the exact reporting line(s).

* Athlete Biological Passport
 ** Erythropoietin
 † Isotope ratio mass spectrometry
 ‡ Minimum required performance levels
 ° Plasma volume marker quantification
 °° World Anti-Doping Code and International Standards

Steroidal ABP*	EPO**	Glucocorticoids Threshold	PVMQ°
Haematological ABP	IRMS†	ADAMS Testing	Dried Blood Spots
Endocrine ABP	MRPL‡	Prevalence	Code & IS°° Update Drafting Teams
Science Project Review	Contaminants	Homologous Blood Transfusion	Taskforce on Unintentional Doping